



## 25 mg CBD Full Spectrum Soft Gels

<b>Product Description:</b>	Full Spectrum Soft Gels
<b>Formulation Date:</b>	11/1/2020
<b>Expiration Date:</b>	11/2022
<b>Country of Origin</b>	United States
<b>Storage:</b>	Store in a cool, dry place away from light. Do not use if safety seal is broken.
<b>Packaging:</b>	30 Dram Container
<b>Disclaimers:</b>	Keep out of reach of children. No to be used during pregnancy or lactation. Please consult a physician before taking if you have a medical condition or are currently taking other medications.
<b>Safety Warning:</b>	This product has not been evaluated by the United States Food and Drug Administration (FDA) and is not intended to diagnose, treat, cure or prevent any disease. This product contains <0.3% THC, compliant with the Federal Farm Bill.

## Batch Information

**Batch Size:** 10000 Soft Gels

## Test Results Summary

### Cannabinoids per Gel Capsule (One Gel Cap = 0.5 g)

Cannabinoid	Gummy Total (mg)	Weight Percentage (%)
Total CBD	38.4	7.69
Total THC	0.94	0.1878
CBC	0.57	0.08
CBDV	0.14	0.020
CBG	0.50	0.07
Total Cannabinoids	40.2	8.05

### Other Testing

Residual Solvents:	None Detected	Microbials	None Detected
Heavy Metals:	None Detected		
Pesticides:	None Detected		
Mycotoxins:	None Detected		



## Certificate of Analysis

**Customer:**  
Pharm CBD  
2580 Highway 42 West  
Bedford, KY 40006

Sample ID: **200904021**  
Order Number: **CB200904007**  
Sample Name: **20080-1**

Collected Date:  
Received Date: **9/4/2020**  
COA Released: **9/8/2020**

External Sample ID:  
Batch Number: **20080**  
Product Type: **Edible**  
Sample Type: **Edible**

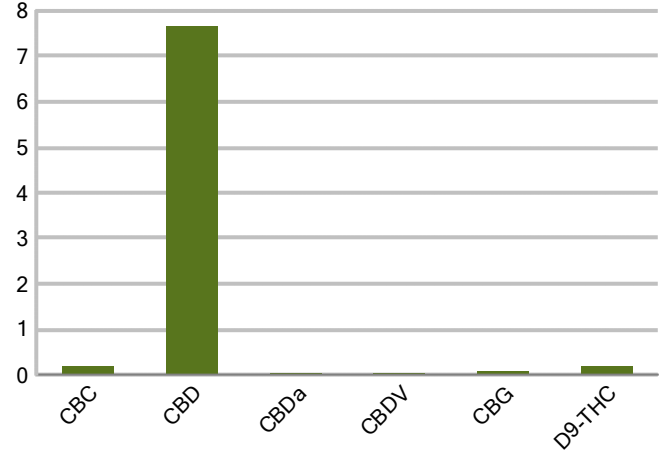
Comments:

### CANNABINOID PROFILE

Analyte	LOQ (%)	% weight	mg/g
CBC	0.01	0.180	1.798
CBD	0.01	7.668	76.68
CBDa	0.01	0.024	0.236
CBDV	0.01	0.039	0.388
CBG	0.01	0.080	0.805
CBGa	0.01	ND	ND
CBN	0.01	ND	ND
d8-THC	0.01	ND	ND
d9-THC	0.01	0.188	1.878
THCa	0.01	ND	ND
<b>Total Cannabinoids</b>		<b>8.178</b>	<b>81.78</b>
<b>Total Potential THC</b>		<b>0.188</b>	<b>1.878</b>
<b>Total Potential CBD</b>		<b>7.689</b>	<b>76.89</b>
<b>Total Potential CBG</b>		<b>0.080</b>	<b>0.805</b>



Cannabinoids (% weight)



**Ratio of Total Potential CBD to Total Potential THC 40.90 : 1**

**Ratio of Total Potential CBG to Total Potential THC 0.43 : 1**

\*Total Cannabinoids refers to the sum of all cannabinoids detected.

\*Total Potential CBD = (0.877 x CBDa) + CBD. \*Total Potential THC = (0.877 x THCa) + THC. \*Total Potential CBG = (0.877 x CBGa) + CBG.

\*Total Potential THC/CBD are calculated to take into account the loss of an acid group during decarboxylation.



**PJLA**  
Testing  
Accreditation #109588

Authorized Signature

Laboratory Manager

Jamie Hobgood

09/08/2020 9:31 AM

DATE

This product has been tested by CannaBusiness Laboratories using validated testing methodologies and a quality system. Values reported relate only to the product tested. CannaBusiness Laboratories makes no claims as to the efficacy, safety, or other risks associated with any detected or non-detected levels of any compounds reported herein. This Certificate shall be reproduced except in full, without the written permission of CannaBusiness Laboratories. Uncertainty information is available on request. Photo is of sample received by the lab and may vary from final packaging. The results apply to the sample as received. ISO/IEC 17025:2017 Accredited.



CannaBusiness Laboratories, LLC

2554 Palumbo Dr. Lexington, KY 40509



Sample ID: 200904021  
 Sample Name: 20080-1  
 Sample Type: Edible

## Certificate of Analysis

### Customer

Pharm CBD  
 2580 Highway 42 West  
 Bedford, KY 40006



### Overall Batch Results

Pesticide N/A	Moisture Content N/A
Potency PASS	Water Activity N/A
Mycotoxins N/A	Heavy Metals N/A
Microbial Screen N/A	Residual Solvents N/A
Terpenoids N/A	

Sample Name: 20080-1

Sample ID: 200904021

Product Type: Edible

Sample Type: Edible

Collected Date:

Received Date: 09/04/2020

Batch Number:

Batch Size:

Sample Size:

COA released: 09/08/2020 9:31 AM

### Potency (mg/g)

Date Tested: 09/05/2020

Method:

Instrument:

<b>0.188 %</b> Total THC	<b>7.689 %</b> Total CBD	<b>8.178 %</b> Total Cannabinoids	<b>81.78 mg/g</b> Total Cannabinoids
-----------------------------	-----------------------------	--------------------------------------	---

Analyte	Result	Units	LOQ	Result	Units
CBC (Cannabichromene)	0.180	%	0.010	1.798	mg/g
CBD (Cannabidiol)	7.668	%	0.010	76.68	mg/g
CBDa (Cannabidiolic Acid)	0.024	%	0.010	0.236	mg/g
CBDV (Cannabidivarin)	0.039	%	0.010	0.388	mg/g
CBG (Cannabigerol)	0.080	%	0.010	0.805	mg/g
CBGa (Cannabigerolic Acid)	ND	%	0.010	ND	mg/g
CBN (Cannabinol)	ND	%	0.010	ND	mg/g
D8-THC (D8-Tetrahydrocannabinol)	ND	%	0.010	ND	mg/g
D9-THC (D9-Tetrahydrocannabinol)	0.188	%	0.010	1.878	mg/g
THCa (Tetrahydrocannabinolic Acid)	ND	%	0.010	ND	mg/g



PJLA  
 Testing  
 Accreditation #109588

### Authorized Signature

Laboratory Manager

Jamie Hobgood

09/08/2020 9:31 AM

Date Time

NT = Not tested, ND = Not detected; LOQ = Limit of Quantitation; <LOQ = Detected; >ULOL = Above upper limit of linearity; CFU/g = Colony forming units per 1 gram; TNTC = Too numerous to count

CannaBusiness Laboratories  
 License # P-0059: (859)-514- 6999 <https://www.cannabusinesslabs.us>

This product has been tested by CannaBusiness Laboratories using validated testing methodologies and a quality system. Values reported relate only to the product tested. CannaBusiness Laboratories makes no claims as to the efficacy, safety, or other risks associated with any detected or non-detected levels of any compounds reported herein. This Certificate shall not be reproduced except in full, without the written permission of CannaBusiness Laboratories. Uncertainty information is available on request. Photo is of sample received by the lab and may vary from final packaging. The results apply to the sample as received. ISO/IEC 17025:2017 Accredited.